

HIGH TECH PET



The Most Ingenious Pet Products On The Planet

SLIDING GLASS PATIO PANEL GEN2 **Power Pet**® Automatic Pet Door



INSTALLATION & OPERATING INSTRUCTIONS

Power Pet, Regular Height, Patio Door Assembly Steps

Estimated assembly time: Under 1 hour

STEP 1: Assemble the tools you will need

1. Size #1 Phillips screwdriver
2. Electric drill
3. 3/32 Drill Bit
4. #32 (.117") drill bit
5. 1/4 drill bit
6. Scissors
7. Tape Measure
8. Pencil
9. Safety Glasses
10. Power Drill



STEP 2: Unpack your door

Remove all parts from box. Plastic corner protectors may be recycled along with cardboard packaging.

1. Bottom Panel Assembly with **Power Pet®** Door
2. Top Panel Assembly
3. MS-5 Collar Kit
4. AC Adapter
5. Range Knobs (2)
6. Weather Stripping
7. Draft Stopper Seal
8. Section Connectors (2) Pre-Installed
9. Lock Knob Handle (1)
10. Lock Hasp (1)
11. House Lock Tab (2)

- 12. Vacation Lock (1)
- 13. Round Hole Plug (2)
- 14. 1/16 Hex L-Key Wrench
- 15. 1/8 Hex L-Key Wrench
- 16. #8 x 3/4" Round Head Self-Tapping Metal Screw (2)
- 17. #6 x 3/8" Tapered Cutting Metal Screws (2)
- 18. #6 x 3/32" x 3/4" Round Head Machine Screws (2)
- 19. #6 x 1/2" Round Head Sheet Metal Screw (2)

STEP 3: Account For Door And Collar Parts

Power Pet[®] Door and MS-5 Collar Kit



STEP 4: Account For Accessory Parts

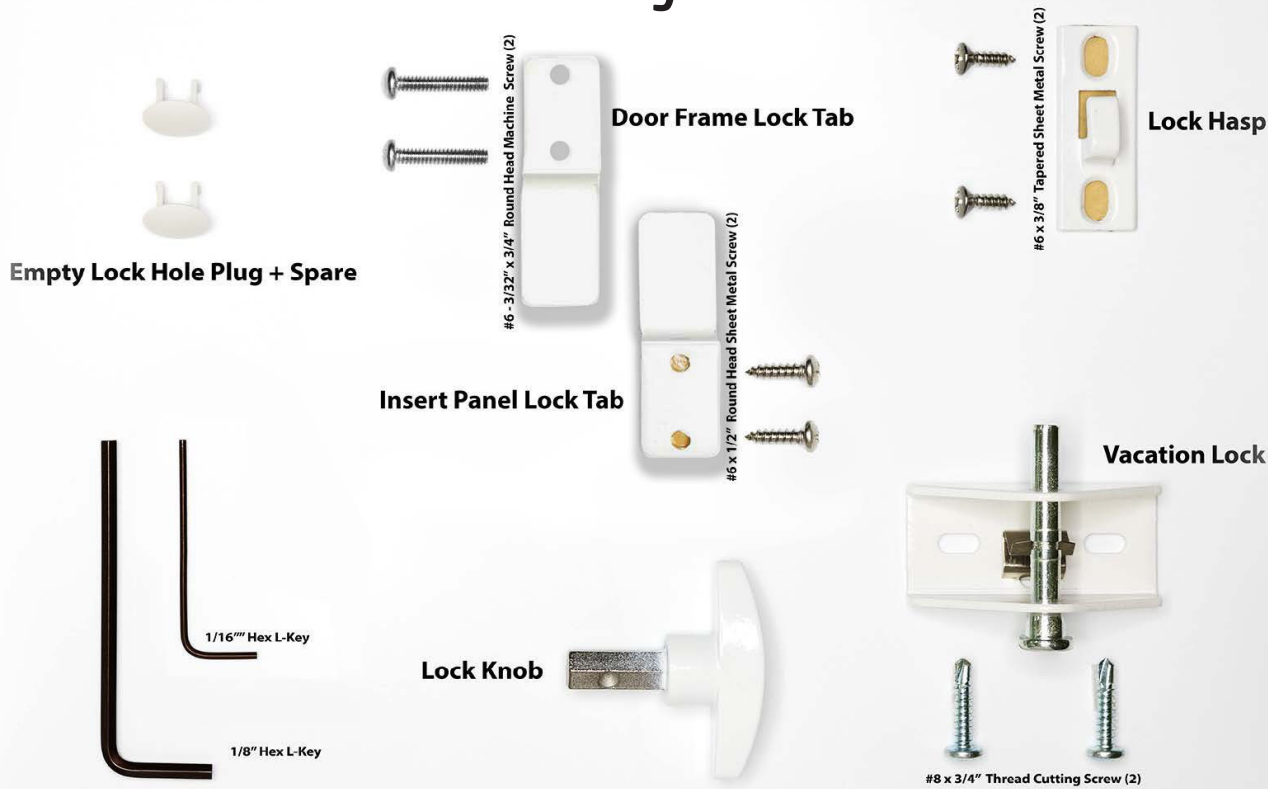


Fig 3B

STEP 5: Account For Insulation Materials



Fig 3C

STEP 6: Loosen Section Connectors

Loosen Section Connectors on the Top Panel Assembly using the 1/8" Hex L-key. Extend the connectors to the halfway mark and re-tighten the top set screw as shown in Figure 6.

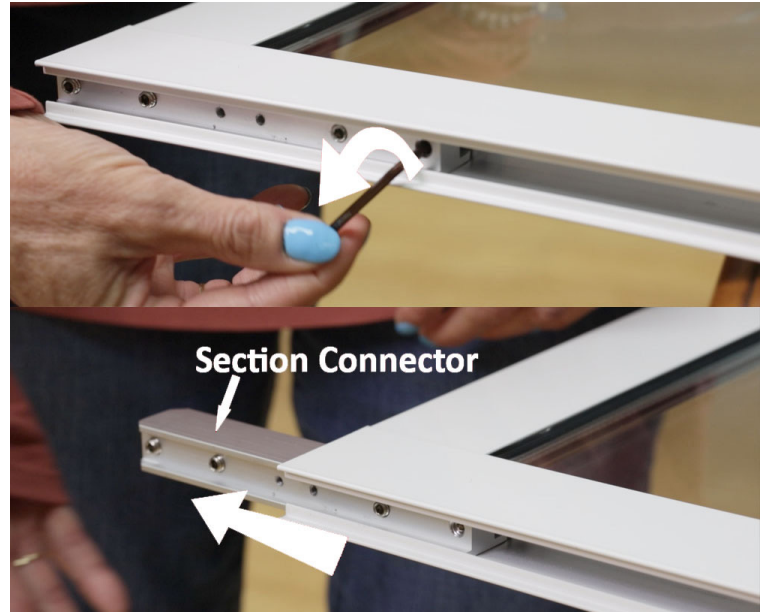


Fig 6

STEP 7: Combine Top and Bottom Panels

Insert Top Panel on to Bottom Panel as shown in Figure 7.



Fig 7

STEP 8: Tighten Section Connector Set Screws

Tighten all 8 section connector set screws using the 1/8" Hex L-key as shown in Figure 8.



Fig 8

STEP 9: Loosen The Top Slider Set Screws

Loosen the Top Slider locking set screws on the left and right sides of the Top Panel Assembly using the 1/8" Hex L-key. Push it up by hand so that it slides to its highest position. Figure 9



Fig 9

STEP 10: Insert The Patio Pet Door Into Your Sliding Glass Door Track

Place assembled panel into the bottom of your sliding door track. (Fig 10A) Tilt the pet door assembly up. (Fig 10B). pull down on the Top Slider. Insert the Top Slider into the top of your door track and release. Figure 10C



Fig 10A



Fig 10B



Fig 10C

STEP 11: Install House Lock Tab

Use the House Lock Tab without sticky back. Screw two #6 X ½" screws into the pre-drilled holes on the section connectors of the assembled Patio Pet Insert Panel. Position the House Lock Tab with the open end pointing downward as shown.



Fig 11

STEP 12: Mark The Height Of The House Lock Tab On Your Sliding Glass Door Track

Measure from the sliding rail at the base of your door track to the inside of the house lock tab on your patio door. (Figure 12A) Then mark this height on the inside of your door track (Figure 12B). Remove the tape liner from the House Lock Tab with taped backing and Position the top of the non-drilled end at this mark as shown in Figure 12C.

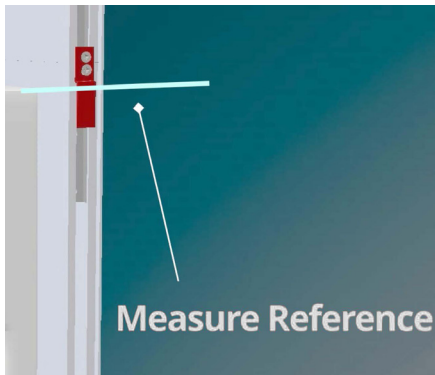


Fig 12A



Fig 12B



Fig 12C

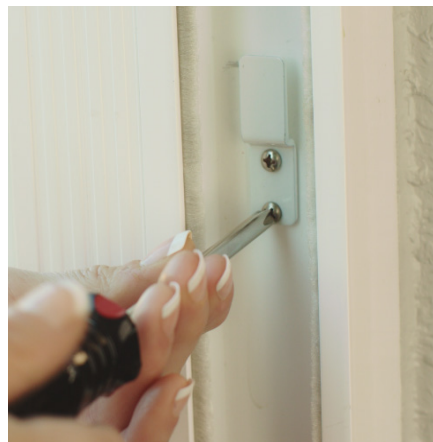
STEP 13: Drill Screw Holes and Mount The Lock House Tab

Drill (2) holes into your door track using a 3/32" drill bit. Figure 13a
Screw the Lock House Tab to your door track using (2) #6 X 1/2" screws. Figure 13b

Fig 13a



Fig 13b



STEP 14: Insert Round Hole Plug(s)

Built-in door locks are provided on both sides of the Top Panel Assembly for left and right opening of sliding glass doors. Install a Round Hole Plug in one or both holes. Figure 15

Fig 15



STEP 15: Engage The House Lock Tabs

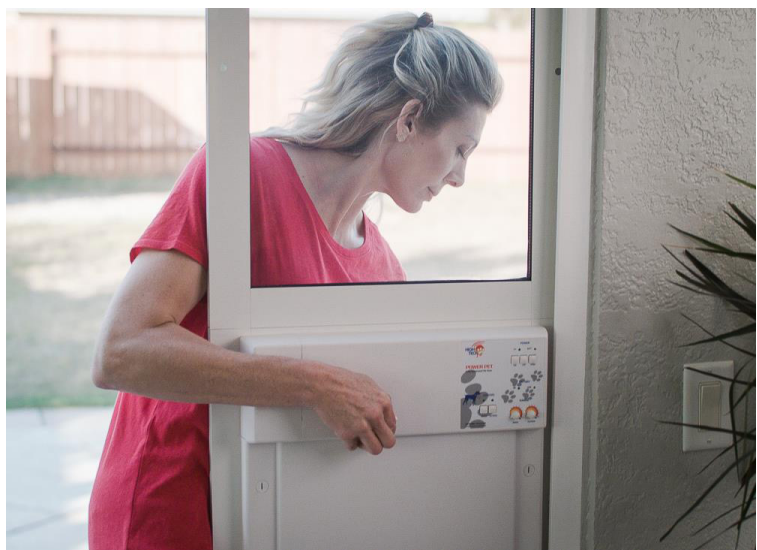


Fig 15A

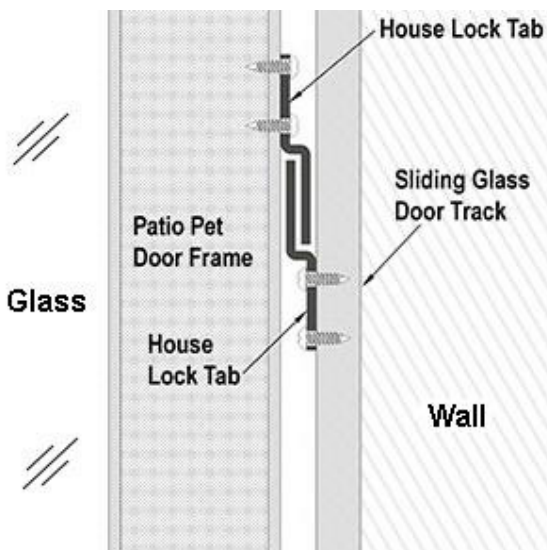


Fig 15B

Step 15 Continued:

Slide the assembled pet door so that it butts up against the inside of your sliding glass door track. Firmly grab the pet door from the inside and outside. Lift up and push against the sliding glass door track letting the House Lock Tabs engage each other as the door frame drops into its final position.

Figure 15A

STEP 16: Tighten The Top Slider Set Screw

Once your Door Assembly is in place, you will have access to the Top Slider Set Screw on the side facing your sliding glass door. Tighten the set screw using the 1/8" Hex L-key. This will lock the Top Slider Panel in place. Figure 16



Fig 16

STEP 17: Install The Lock Knob

Install the Lock Handle so that the handle is vertical when the lock is open Figure 17 (Lock Arm is in up position.) Turning the Lock Handle counterclockwise should move the Lock Arm to the closed position.

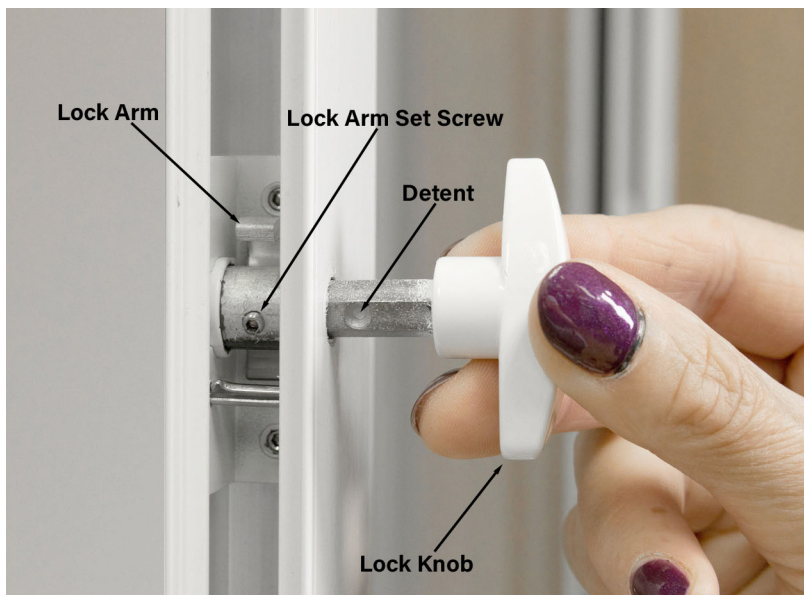


Fig 17

Note:

**Note that there are (2) detents in the Lock Knob for left or right side opening of your slider glass door. Make sure the handle is oriented vertically and that one of the detents aligns with the Lock Arm Set Screw. Fig 17b

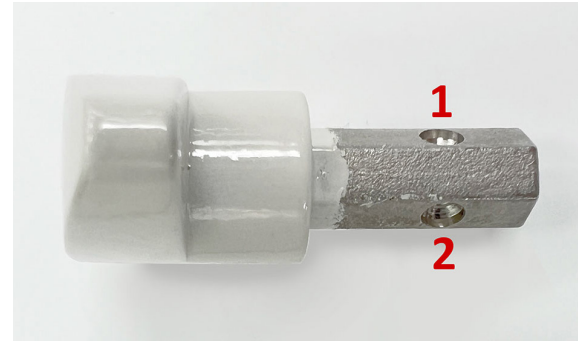


Fig 17B

STEP 18: Tighten The Lock Arm Set Screw

Tighten the Lock Arm set screw using the 1/16" Hex L-key. Note that there should be a sight gap between the Lock Knob and the patio pet door panel when the unit is assembled correctly. Figure 18

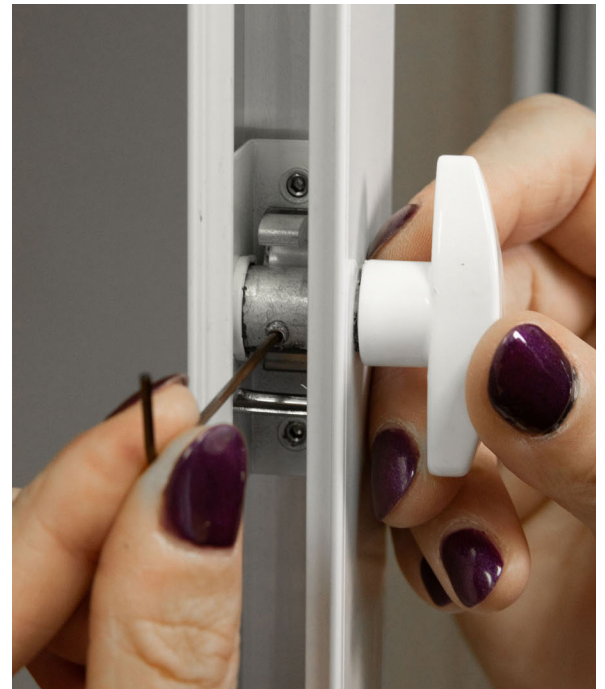


Fig 18

STEP 19: Insert Lock Hasp Into The Door Lock Housing

Insert the Lock Hasp into the Door Lock Housing as shown in Figure 19A. Turn the Lock Handle counterclockwise so that the Lock Hasp is trapped in the Door Lock Assembly. Figure 19B Then, remove the protective liner from the tape on the back of the Lock Hasp. Figure 19C



Fig 19A



Fig 19B



Fig 19C

STEP 20: Transfer the Lock Hasp to your sliding door

Slide your patio door closed so that the Lock Hasp tape makes contact and affixes to the sliding glass door. Figure 20A Turn the Lock Handle clockwise, releasing the Lock Hasp and open your sliding glass door. The Lock Hasp should now be affixed to your sliding glass door. Figure 20B



Fig 20A

Close your sliding glass door so that the tape on the Lock Hasp attaches to your sliding door.



Fig 20B

Turn Lock Knob clockwise and open your sliding glass door.

STEP 21: Drill Screw Holes and Mount The Lock Hasp

Using the 3/32" drill bit, drill (2) holes within the slots of the Lock Hasp. Figure 21A



Fig 21A

Attach the Lock Hasp to your sliding glass door with (2) #6 X 1/2 round head sheet metal screws. Figure 21B.



Fig 21B

STEP 22: Apply Weather Stripping

Peel and stick the Die-cut foam so that the lock arm is centered in the die-cut hole. Starting at the bottom of the die-cut, apply the weather stripping to the inside edge of the open side of the assembled door panel removing the adhesive backing as you move down. Now cut and begin at the top of the die-cut and continue to the top of the Panel Assembly and cut.

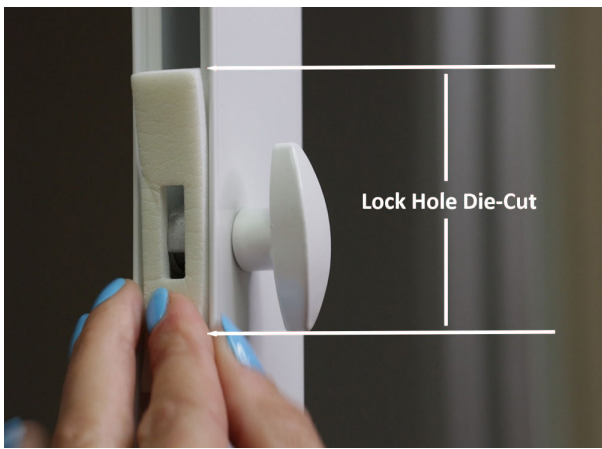


Fig 22A

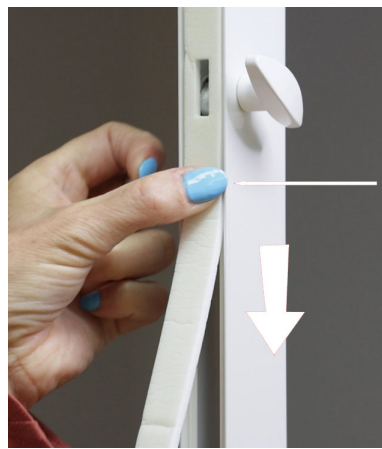


Fig 22B

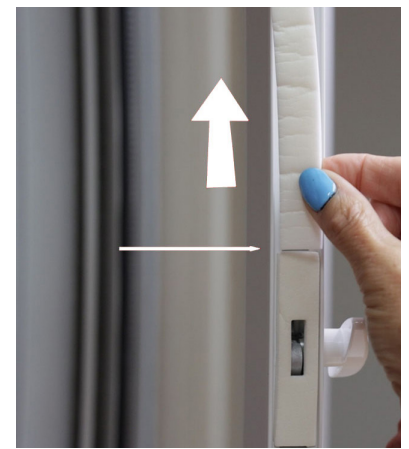


Fig 22C

The Vacation Lock:

The Vacation Lock provides added security. It requires drilling a 1/4" hole at the bottom of your stationary patio door and 2 small holes in your sliding glass door. If you choose to use the Vacation Lock. Follow STEPS 23-25. If not, proceed to Step 26.

STEP 23: Drill The Vacation Lock Bolt Hole

Position the Vacation Lock on the edge of your sliding glass door at the top or bottom with the Locking Bolt extended. The end of the bolt should be facing your stationary door track as shown in Figure 23A. Using a pencil, trace around the circumference of the bolt on the stationary sliding glass door frame. Then Remove the Vacation Lock and mark the approximate center position of the bolt. Figure 25B. Drill a 1/4-inch hole in your stationary sliding glass door frame for the bolt. Figure 23C

Fig 23A



Fig 23B



Fig 23C



STEP 24: Drill The Vacation Lock Mounting Holes

With the bolt extended and inserted into the drilled hole, position the Vacation Lock onto the edge of your sliding glass door and, with a pencil, trace the slots of the Vacation Lock onto the edge of your sliding glass door. (Fig 24 A & B) **Note:** Before drilling, Retract the bolt and make sure there is clearance between the retracted bolt and your stationary door frame. Reposition the Vacation Lock if necessary, to make sure there is clearance but, also making sure that the bolt is still centered on the hole. Figure 24C

Drill (2) holes in your sliding glass door using a #32 drill bit, one hole in the center of each of the slots you marked. Figure 24D



Fig 24A

Trace the two lock slots.



Fig 24B

Marked slots should look like this.



Fig 24C

Drill the center of each slot.



Fig 24D

STEP 25: Screw the Vacation Lock to your Sliding Glass Door

Fasten the Vacation Lock to your sliding glass door using (2) #8x5/8 round head sheet metal screws. Figure 25 A & B



Fig 25A

Screw the Vacation Lock into place.



Fig 25B

Installed Lock shown with retracted bolt.

STEP 26: Apply the Draft Stopper Seal

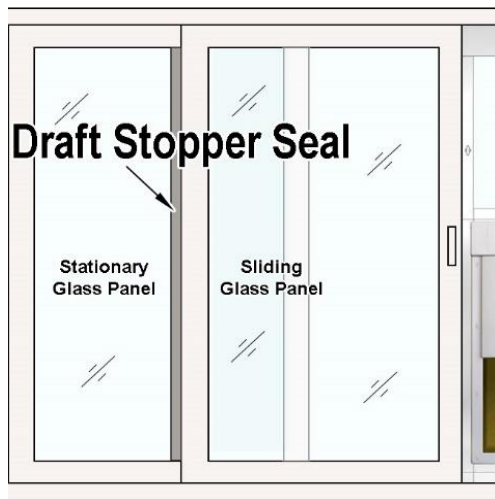


Fig 26A

Seal Placement



Fig 26B

Apply Seal From Top



Fig 26C

Cut Seal At Bottom

Step 26 Continued:

You will need to apply the Draft Stopper seal to the inside of your sliding glass door to seal the opening between your sliding door and the stationary glass. Start at the top of your sliding glass door and apply the seal removing the adhesive backing as you move down. When you reach the bottom, cut the remaining seal material with scissors. Figure 26A, B and C.

CONGRATULATIONS!

Your Power Pet patio pet door installation is complete. If you have any questions, comments or require customer support call us at

1-800-255-1279 (M-F 6:30 AM – 4:00 PM Pacific time). Or email us at support@HighTechPet.com.

Thanks for choosing our pet door. We think you will find you have purchased The Most Ingenious Pet Door on the Planet!

Notes:

ORDER INFORMATION

To order extra collars and accessories please visit our website at www.hightechpet.com or call 1 (800) 255-1279.

Caution: *As with any pet door, supervision of your pet is advised. Failure to do so could result in harm to your pet. Please be sure to provide water and shade outside in the rare event that the electronic door fails to open.*



High Tech Pet Products, Inc.

2111 Portola Rd.

Ventura, CA 93003

www.hightechpet.com